

Solar structure; SHADE STRUCTURE COLLAPSIBLE STRUCTURE

MDT-tex[®]

Membranes & Structures

MDT-TEX SHORT FACTS

SERVICES

MDT manufactures and supplies innovative sun and rain protection systems to customers all around the world. Our products which include storm-safe umbrellas and textile architectures, are especially important for outdoor events and marketing activities. Employing our 20 years experience in product development which include technical textiles and printing, we deliver highest quality products to our customers.

MDT-TEX SOLAR STRUCTURE

CONTENT

1. SOLAR STRUCTURE GENERAL INFORMATION	_3
1.1. Shade structure	
1.2. Collapsible structure	
2. SHADE STRUCTURE - SOLAR PORT	_4
2.1. Solar port	_5
2.2. e-Car port	_6
2.3. e-Bike port	_7
2.4. e-Cart port	_8
3. COLLAPSIBLE STRUCTURE - SOLAR UMBRELLA	_9
3.1. Solar umbrella	_10
3.2. Electronic devices	_11
3.3. e-Bike port	_12
4. SOLAR STRUCTURE ACCESSORIES	_13
4.1. Water harvesting and filtration	_14
4.2. Eucalyptus seating cube	_15
4.3. Eucalyptus terrace flooring	_16
4.4. Mobile green wall	_17
4.6. Torus table	_18
4. FAQ	_19

SHADE STRUCTURE

SOLAR PORT

SOLAR ENERGY

E - CARS

E - BIKES

E - CARTS

SIZE

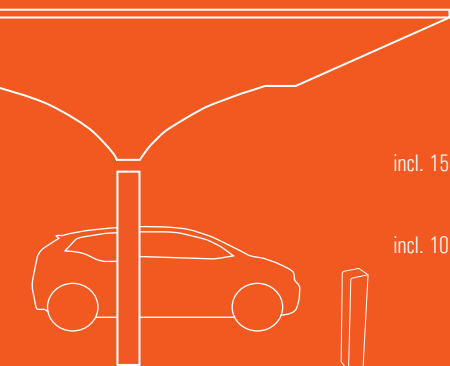
5.5x5.5m

incl. 15 standard solar panels

4.5x4.5m

incl. 10 standard solar panels

3x3m



COLLAPSIBLE STRUCTURE

SOLAR UMBRELLA

SOLAR ENERGY

SMARTPHONE

TABLET COMPUTER

LAPTOP

E - BIKES

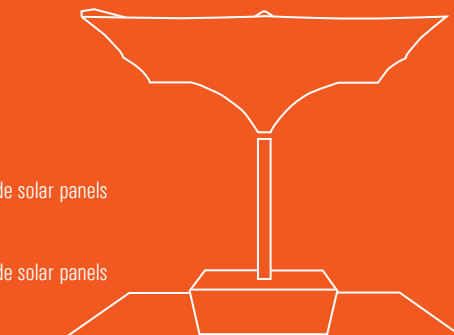
SIZE

4x4m

incl. 4 custom made solar panels

3x3m

incl. 4 custom made solar panels

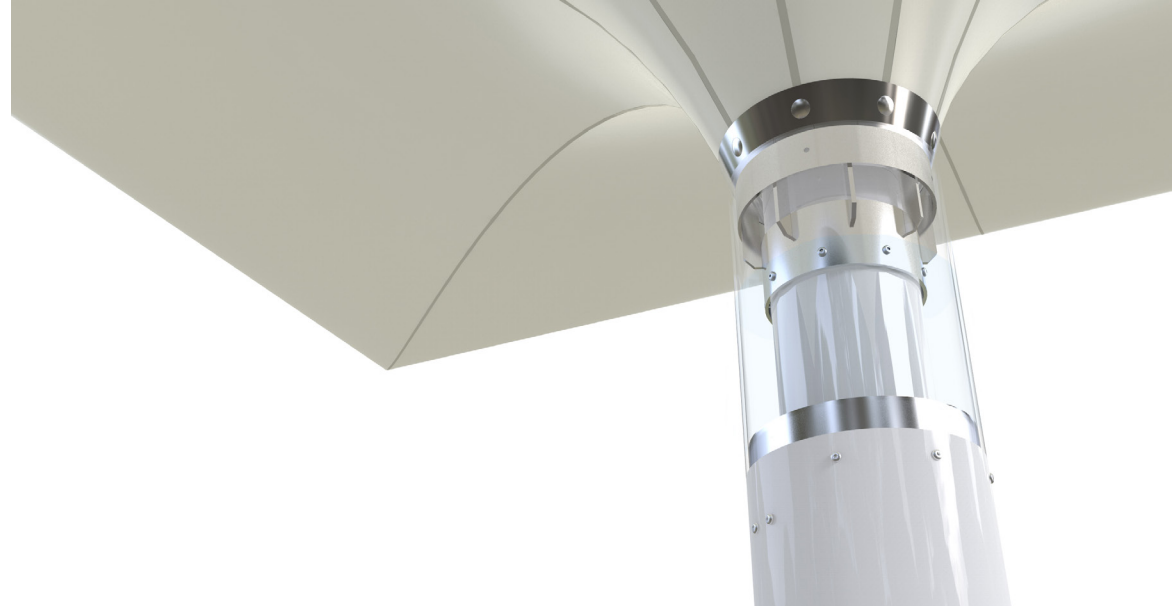
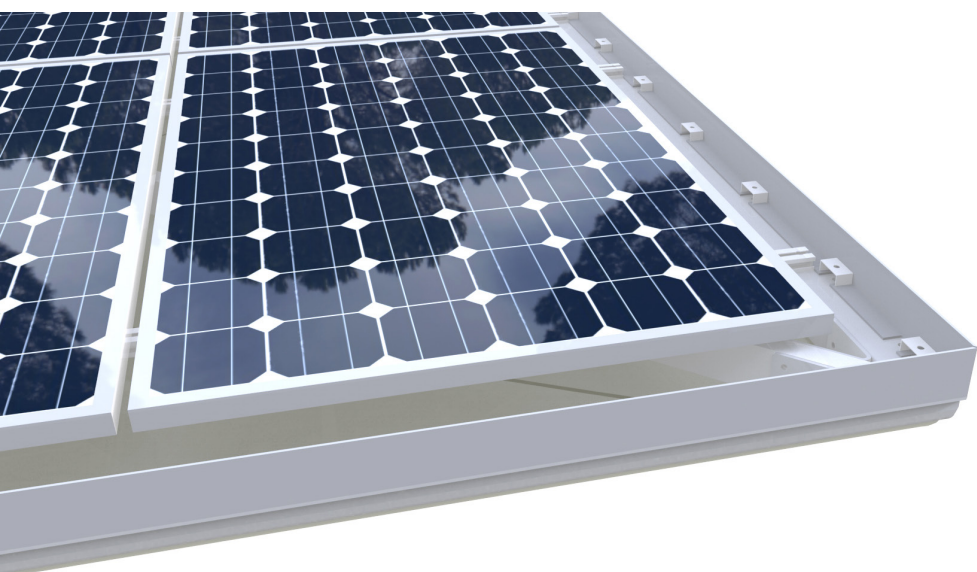


Shade struc ture;

SOLAR PORT

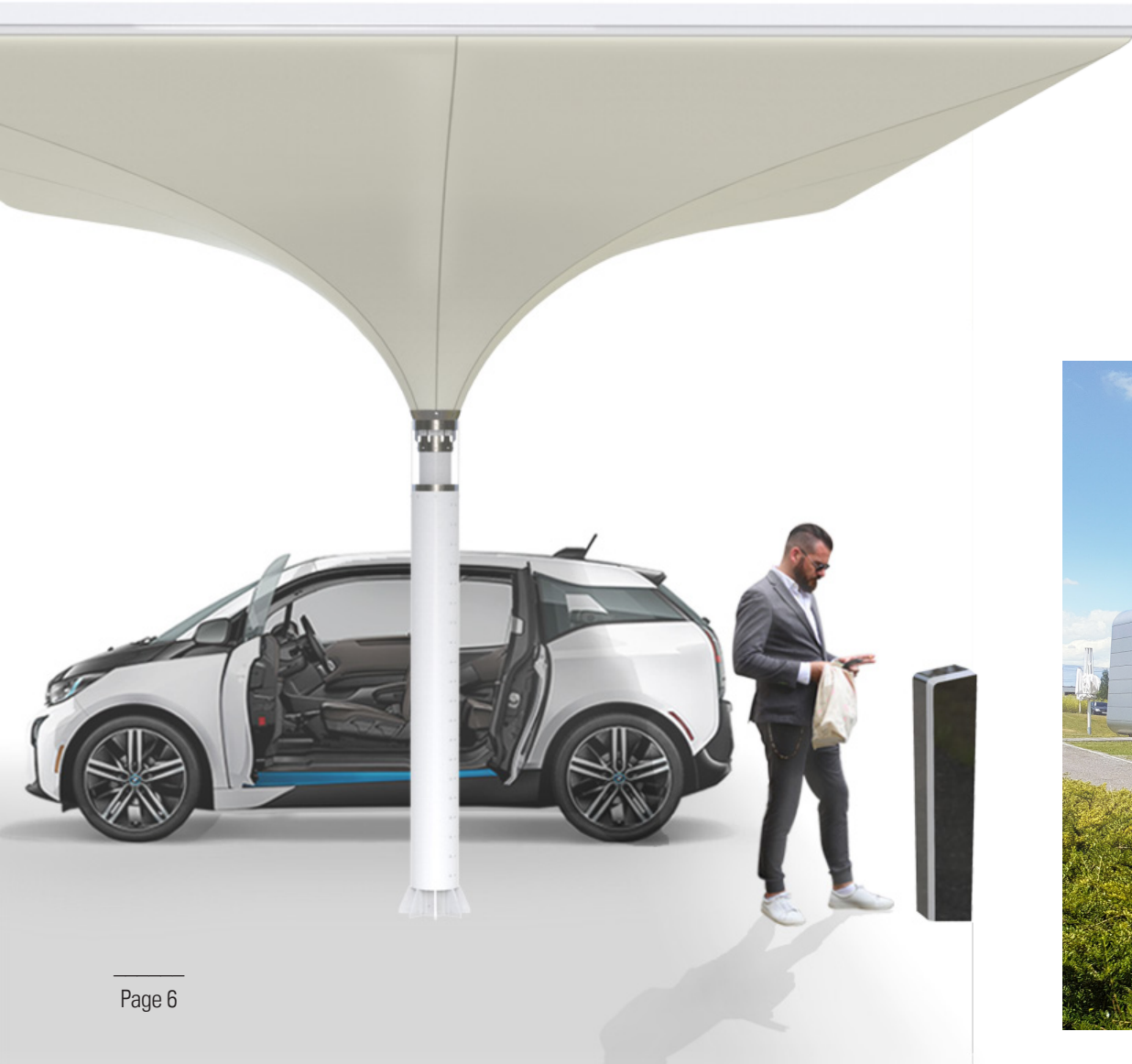
MDT-TEX SHADE STRUCTURE

SOLAR **PORT**



MDT-TEX SHADE STRUCTURE

SOLAR E-CAR PORT



DEVELOPMENT

In a new development the tulip-shaped shade structures are transformed into solar carports capable of harvesting solar-energy and rainwater.

The 5.5 x 5.5m square structure having a central mast can serve as shelter for two cars. Given its modular design, several structures can be placed next to each other in a linear or group configuration.



MDT-TEX SHADE STRUCTURE

SOLAR E-BIKE PORT



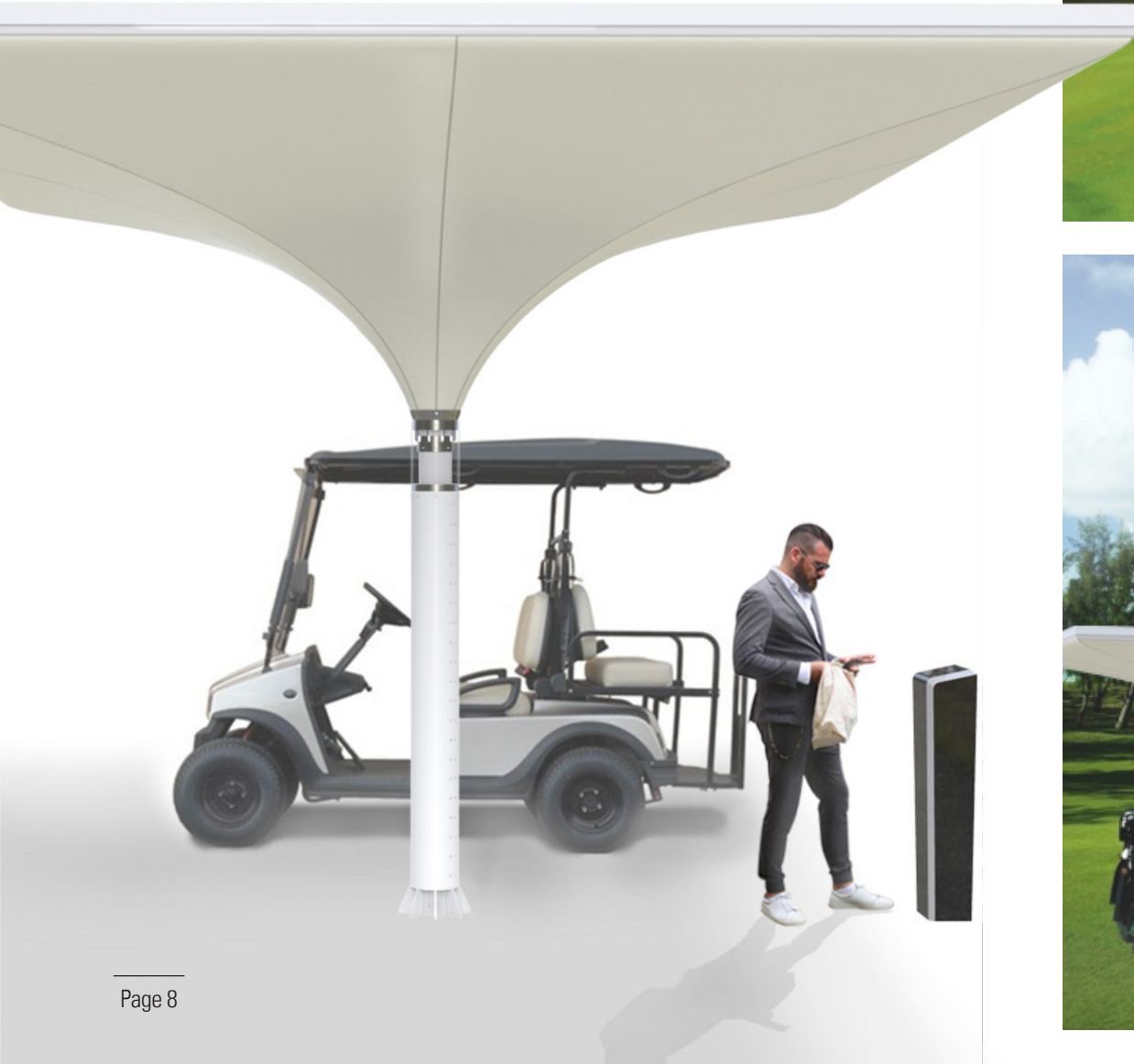
Each solar port can be equipped with up to 15 standard solar panels - each approx. 170x100 cm and containing 60 cells.

Depending on the location and available infrastructure, the harvested energy can be fed into electrical grid or stored in battery banks to be used when required.



MDT-TEX SHADE STRUCTURE

SOLAR E-CART PORT

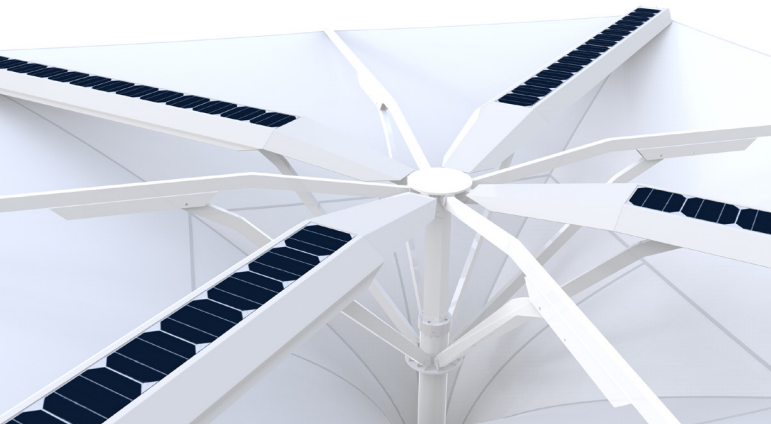
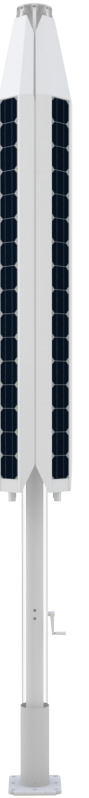
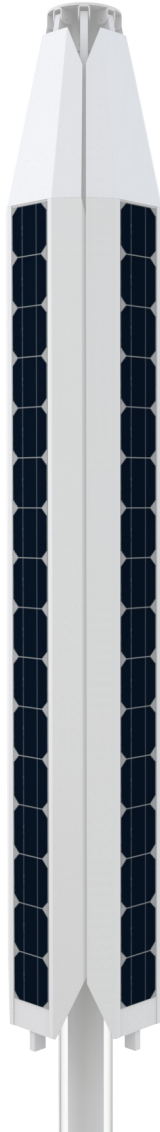
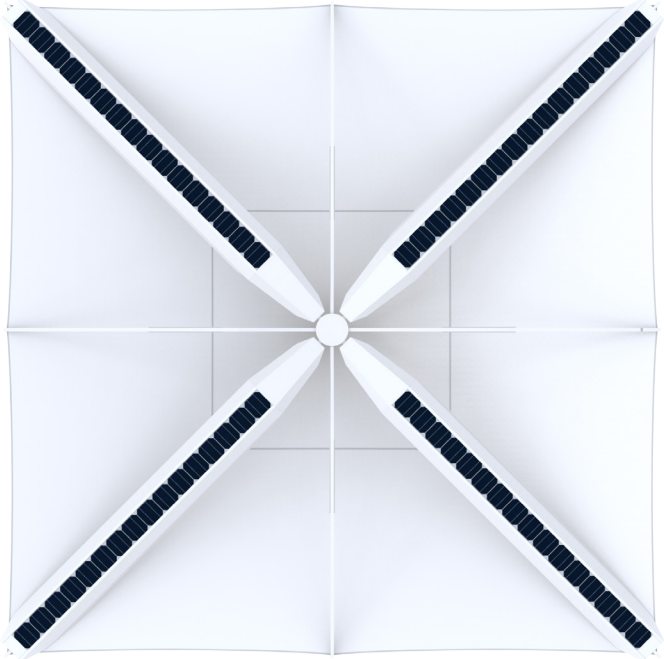


Collapsible structure;

SOLAR UMBRELLA

MDT-TEX COLLAPSIBLE STRUCTURE

SOLAR **UMBRELLA**



MDT-TEX COLLAPSIBLE STRUCTURE

SOLAR **UMBRELLA**

ELECTRONIC DEVICE

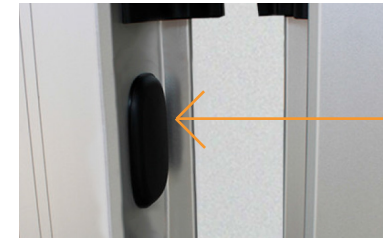


MDT-TEX COLLAPSIBLE STRUCTURE

SOLAR **UMBRELLA** **E-BIKE**



Energy receiving unit



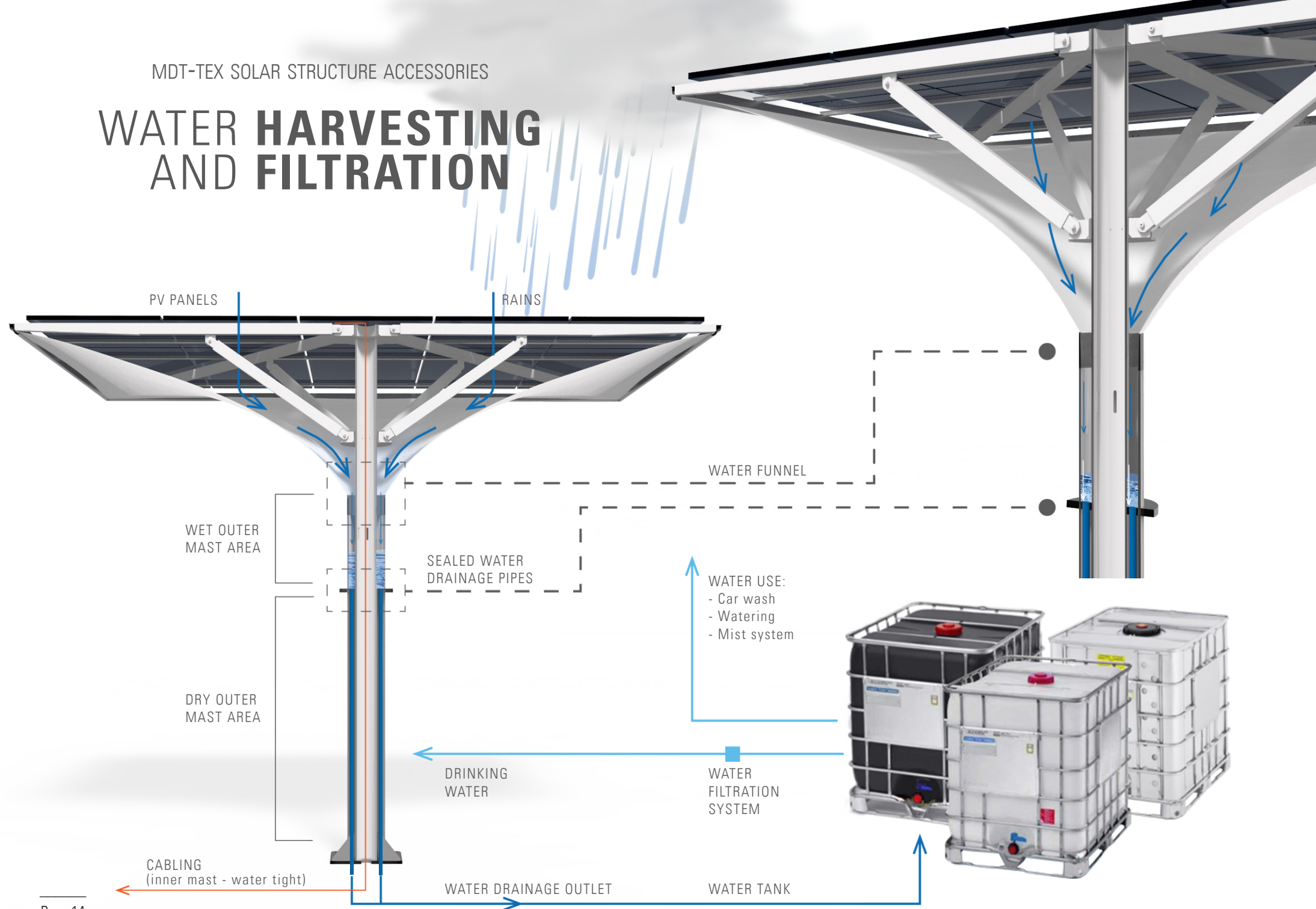
Energy transfer unit



SOLAR STRUCTURES

Accessories;

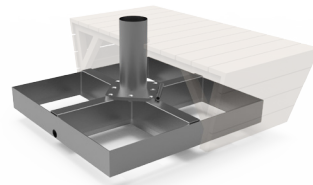
WATER HARVESTING AND FILTRATION



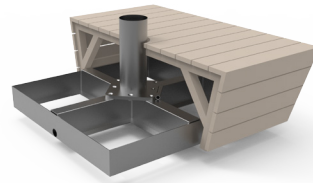
MDT-TEX SOLAR STRUCTURE ACCESSORIES

EUCALYPTUS SEATING CUBE

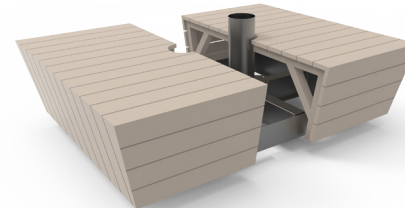
MONTAGE STEPS



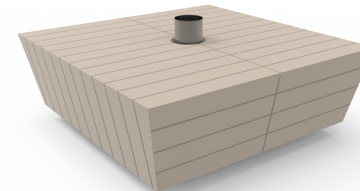
STEP 1



STEP 2



STEP 3

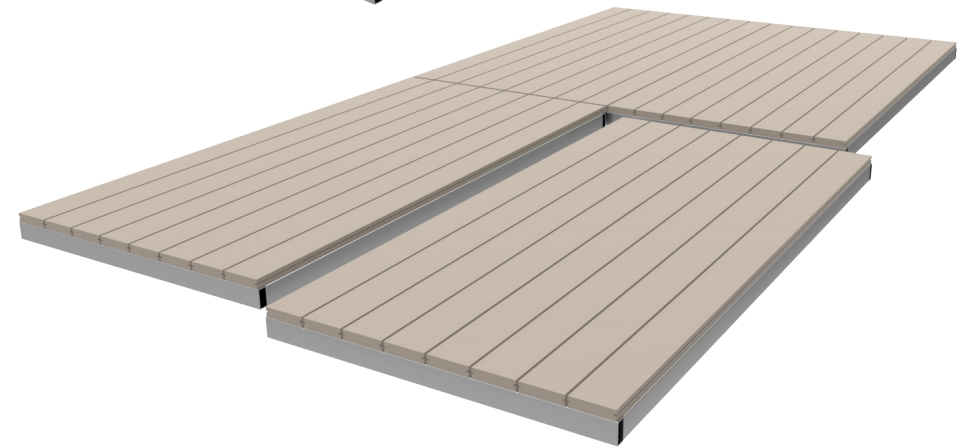
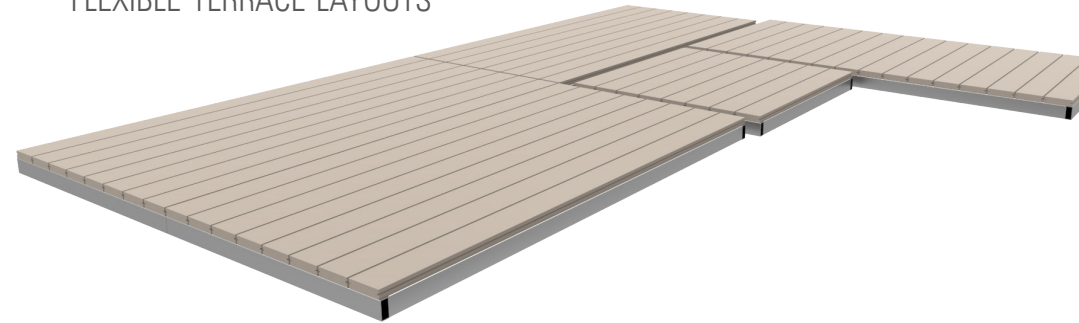


STEP 4



EUCALYPTUS TERRACE FLOORING

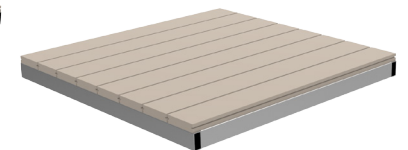
FLEXIBLE TERRACE LAYOUTS



TERRACE ELEMENT TYPES



Long Terrace element 1x2m



Square Terrace element 1x1m



Short Terrace element 1x2m



MDT-TEX SOLAR STRUCTURE ACCESSORIES

MOBILE **GREEN WALL**



FRAME OPTION 1



FRAME OPTION 2



MDT-TEX SOLAR STRUCTURE ACCESSORIES

TORUS TABLE



MDT-TEX SHORT FACTS

THE COMPANY

MDT's core competence includes in-house R&D as part of the pre-production process. Serially produced items, customised projects and single products are manufactured at different international locations and provide the opportunity to realize customer's wishes promptly and flexibly.

LOCATIONS



1 GERMANY

HARDHEIM

- Headquarter
- Aluminum, steel and textile production
- Storage
- General & Static engineering
- National & International Sales
- Key Account Management
- Research & Development

3 LATVIA

RIGA

- Aluminum-, textile production & storage
- Product design
- Prototyping / 3d printing
- Powder coating

2 SWITZERLAND

TÄGERWILEN

- Design and Development
- 3d individuell textile formfinding software
- Architecture and innovations
- International Sales
- Key Account Management

4 USA

TYRONE, GA

- International Sales
- Key Account Management
- Supply chain management
- Storage

5 AUSTRALIA

FREMANTLE

- International Sales
 - Key Account Management
 - Storage
-

MDT-tex[®]

Membranes & Structures

INFORMATION

For more information see:

www.mdt-tex.com

MDT GmbH

Industriestraße 4
74736 Hardheim
Germany

Tel +49-6283-2217 0
Fax +49-6283-2217 900
info.de@mdt-tex.com

MDT Baltic SIA

Ezermalas iela 6
1006 Riga
Latvia

Tel +371-6718-5464
Fax +371-6718-5469
info.lv@mdt-tex.com

MDT AG

Rheinblickstrasse 6
8274 Tägerwilen
Switzerland

Tel +41-71-666 8282
Fax +41-71-666 8283
info.ch@mdt-tex.com

MDT Inc.

971 West Dogwood Trail
30290 Tyrone, GA
USA

Tel +1-770-631 9074
Fax +1-770-486 9903
info.us@mdt-tex.com

MDT Australia PTY LTD

Fremantle, WA
Australia

Tel +61 456 810 888

info@mdt-tex.com.au

