

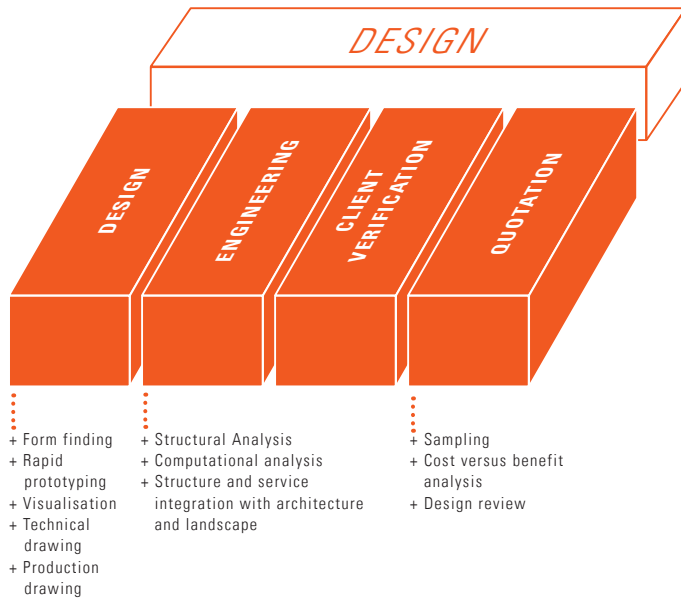
MDT-TEX SHORT FACTS

# MDT DESIGN LAB



# EXPERTISE FROM CONCEPT TO COMPLETION

## THE MDT-TEX DESIGN DEVELOPMENT

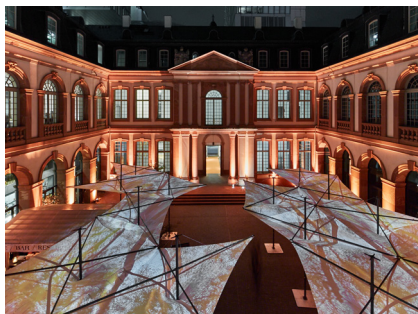


MDT Creative Lab specialises in co-creating new tensile membrane concepts with architectural partners.

We establish long-term creative partnerships with leading architects and designers and offer expertise in design, material specification, engineering and design for manufacture. Our partner list includes Atelier Oi, Grimshaw, Sean Harrington, Furrer Jud, Open AD, Topotek 1, Max Dudler and UN Studio amongst others.

Within these partnerships MDT has one a host of design and architectural awards including: Overall winner of **The International Architecture Award 2013** (from the Chicago Atheneum Museum of Architecture), **The red dot award**, **the MIAW** and **HOUZZ awards**, and **the ARCHITIZER A+ awards**.

## MDT COLLABORATION PROJECTS



MDT + GRIMSHAW ARCHITECTS

**TENSILATION UMBRELLAS  
LUMINALE 2016, FRANKFURT**



MDT + SEÁN HARRINGTON ARCHITECTS

**MEETING HOUSE SQUARE,  
DUBLIN**



MDT + ATELIER OI

**LE SHOP DRIVE - PICK UP  
STATION, SWITZERLAND**



MDT + JEAN NOUVELLE

**RBC DESIGN CENTER,  
FRANCE**



MDT + SNØHETTA

**KING ABDULAZIZ CENTER,  
SAUDI ARABIA**



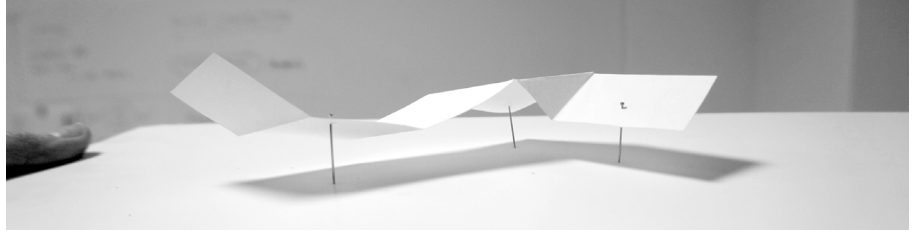
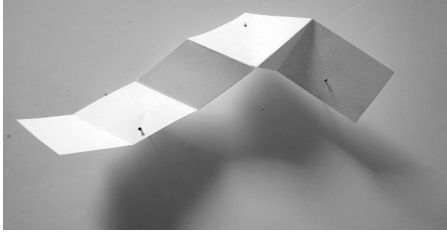
MDT + TOPOTEK 1

**MARKET CAR PLACE,  
BERLIN-KÖPENICK**

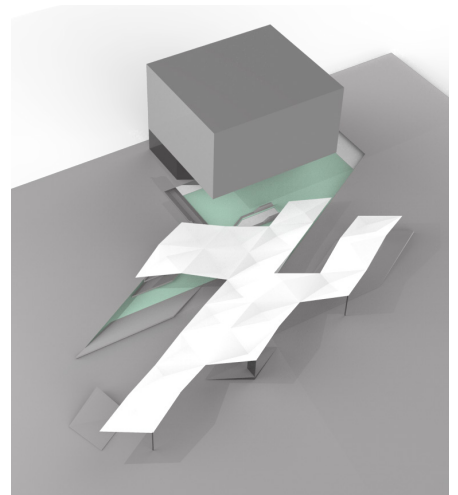
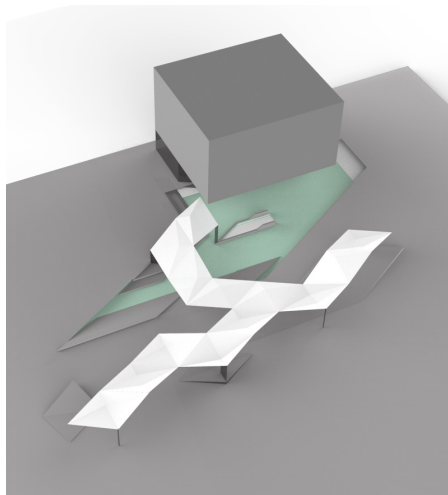
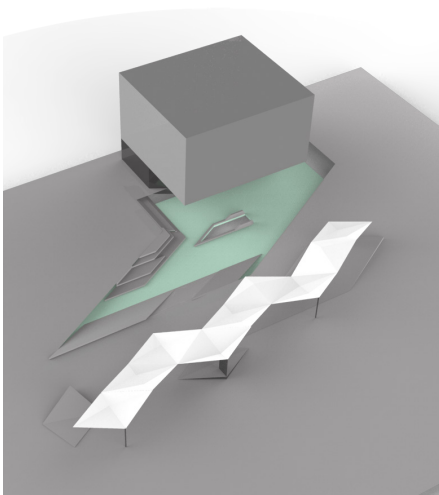
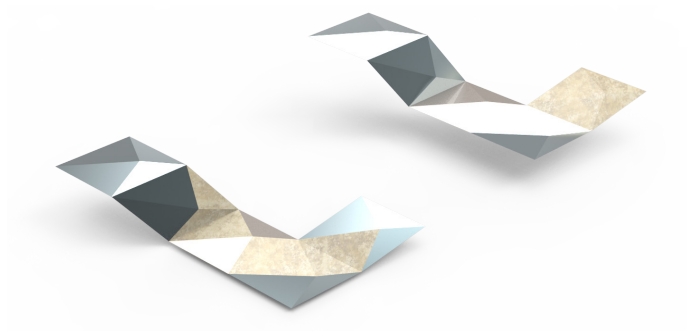
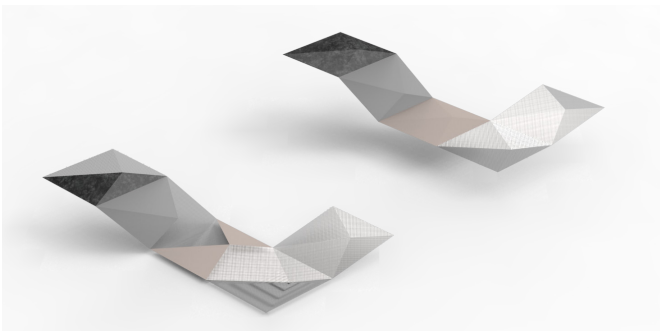
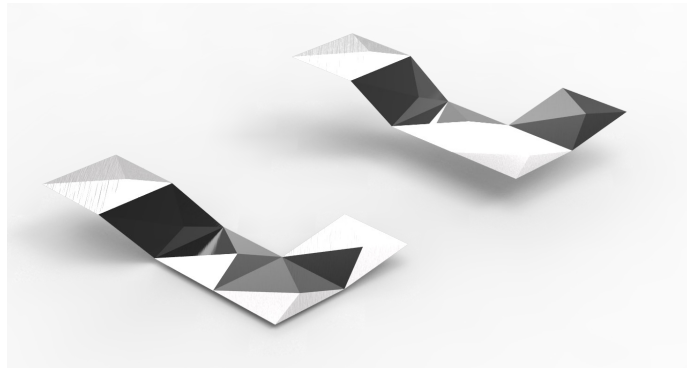
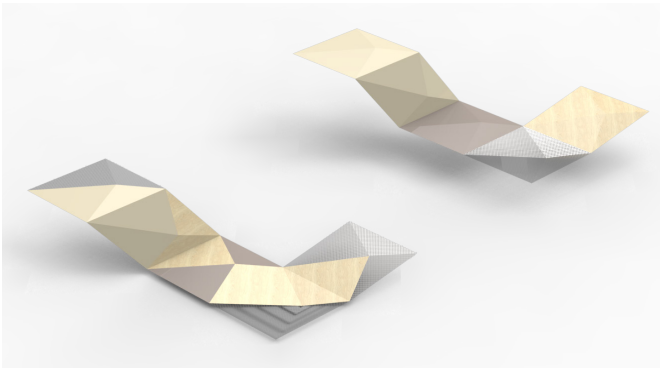
# CONCEPT DEVELOPMENT

---

## SHADING SYSTEM - CELLS



EXPERIMENTS WITH FRAMEWORK-BASED CELLULAR FORMS



# CONCEPT DEVELOPMENT

---

## SHADING SYSTEM



TYPE A.



TYPE B.



# CONCEPT DEVELOPMENT

---

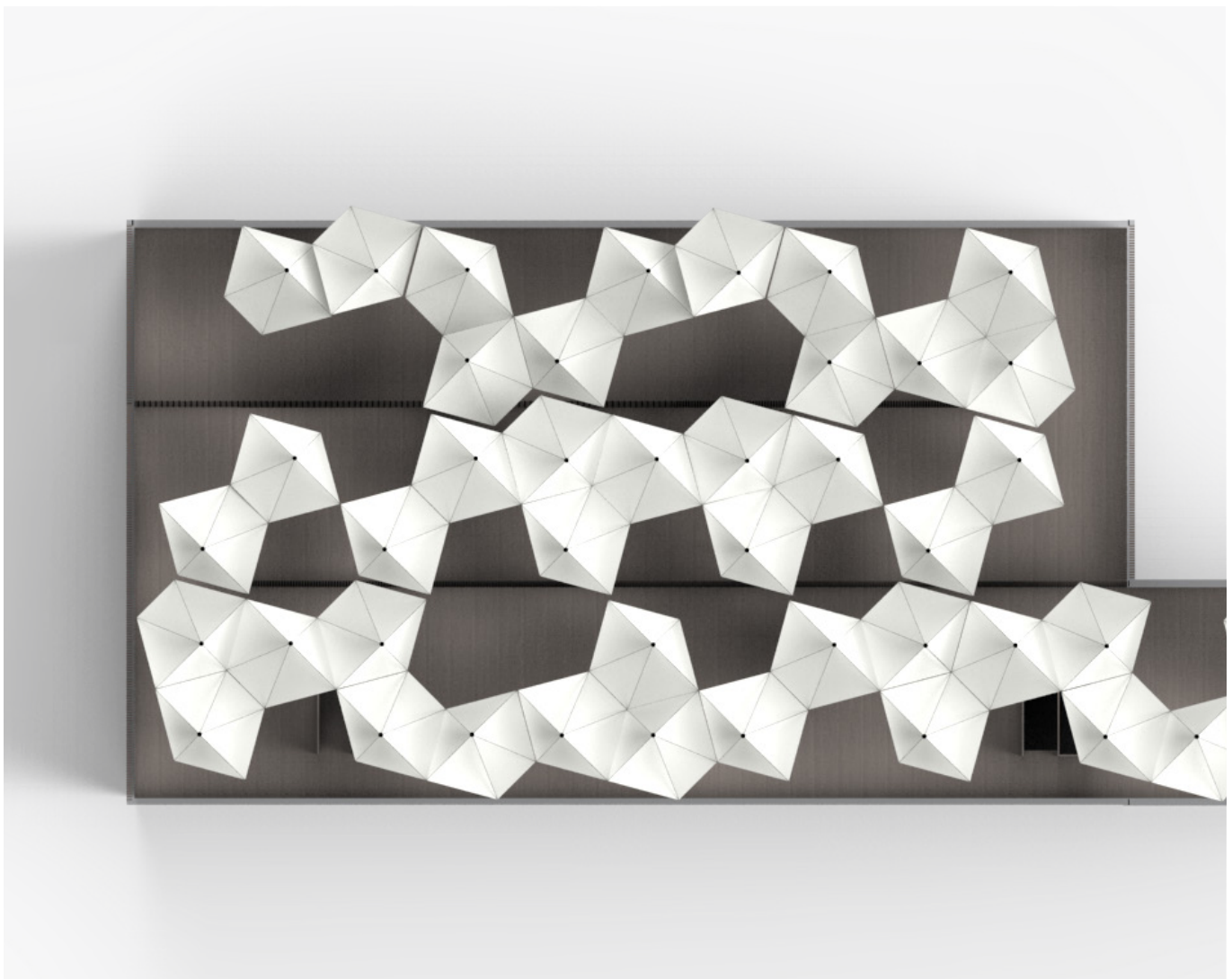
## SHADING SYSTEM - TESSELATING PODS



TYPE A. CONVEX POD MEMBRANE



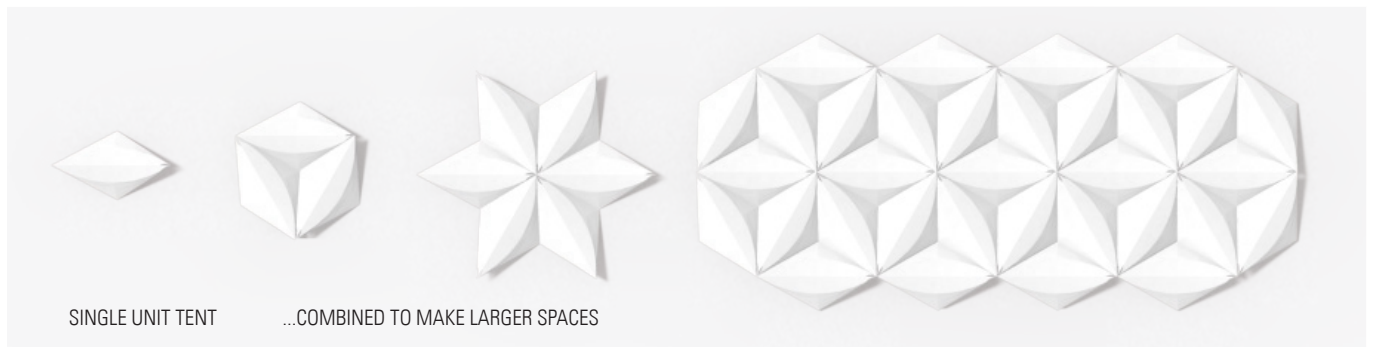
TYPE B. CONCAVE POD MEMBRANE



# CONCEPT DEVELOPMENT

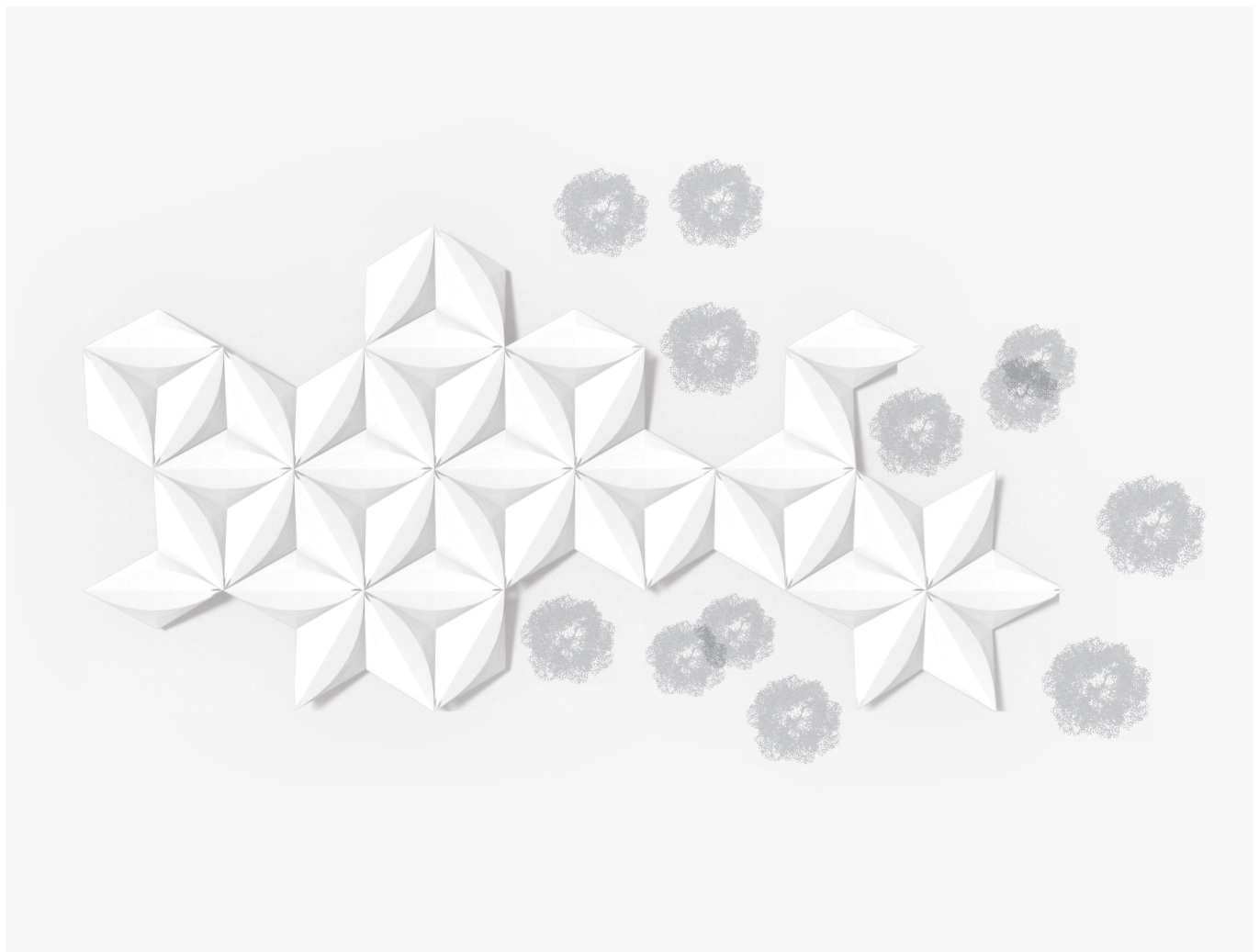
---

## TENT SOLUTIONS - SATELLITES



### PROJECT SYNOPSIS

- > Multiple units can be added to change the size of the undercover space
- > Wind-walls may be connected to close space down in poor weather

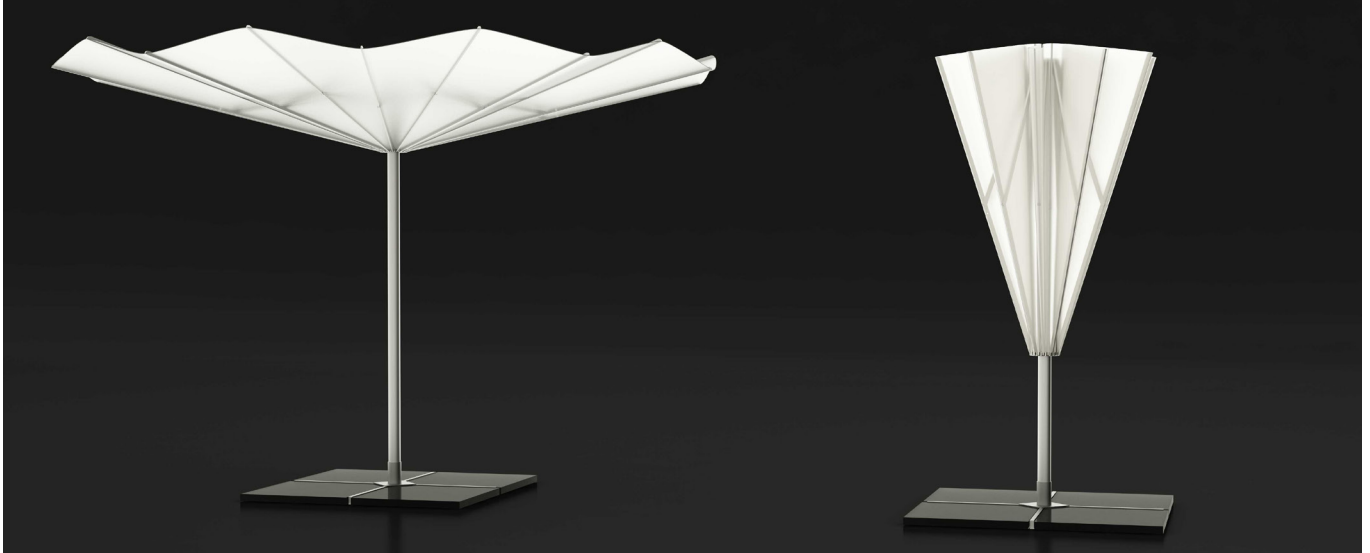


MDT DESIGN LAB

# CONCEPT DEVELOPMENT

---

## SHADING STRUCTURE - UMBRELLA LAMELLA

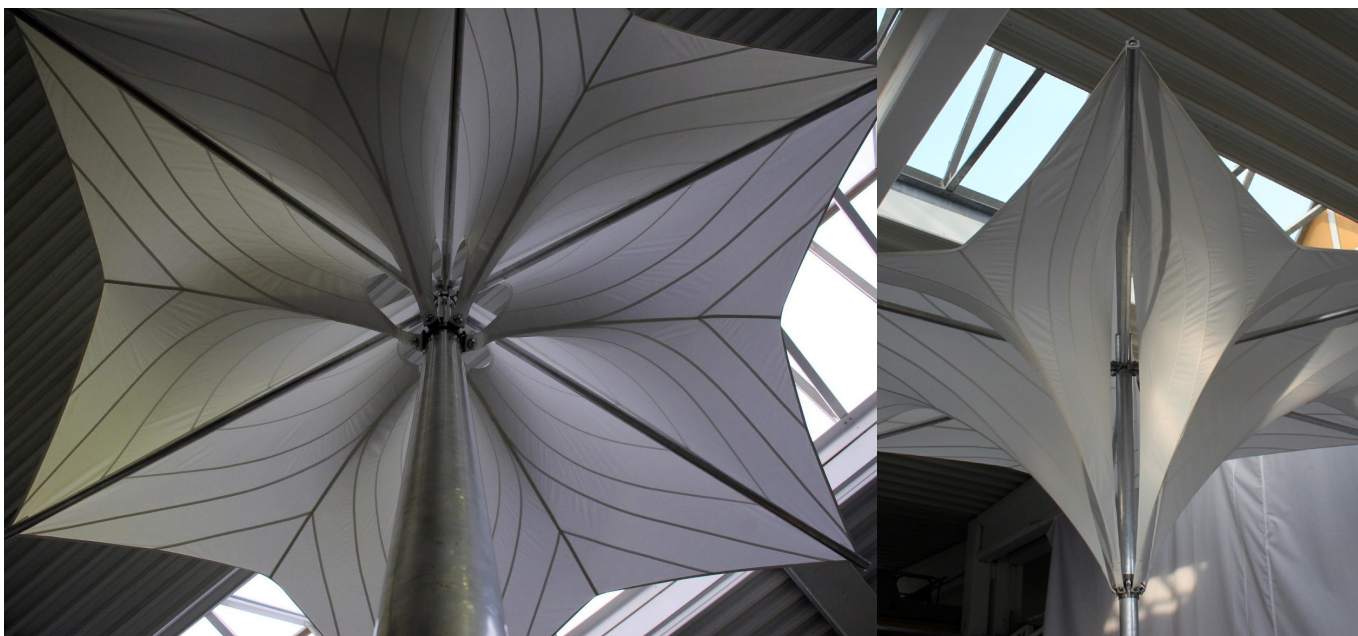


MDT DESIGN LAB

# CONCEPT DEVELOPMENT

---

## SHADING STRUCTURE - NELKE



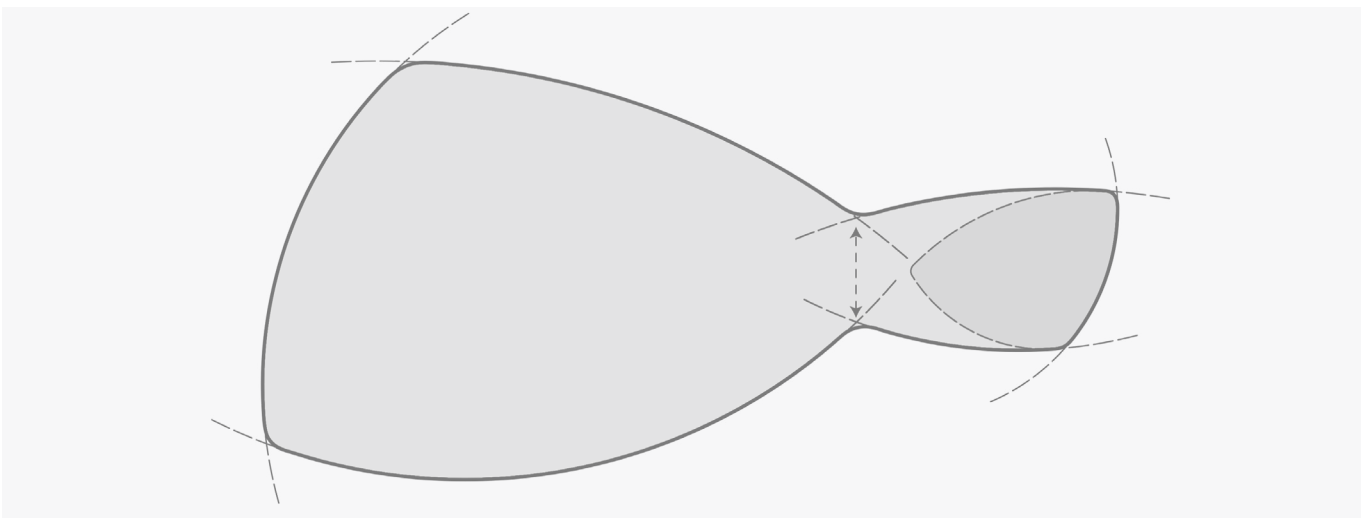


MDT DESIGN LAB

# CONCEPT DEVELOPMENT

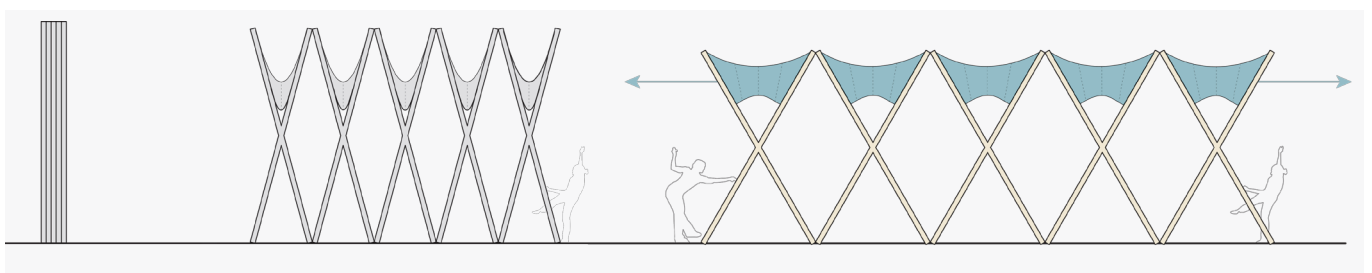
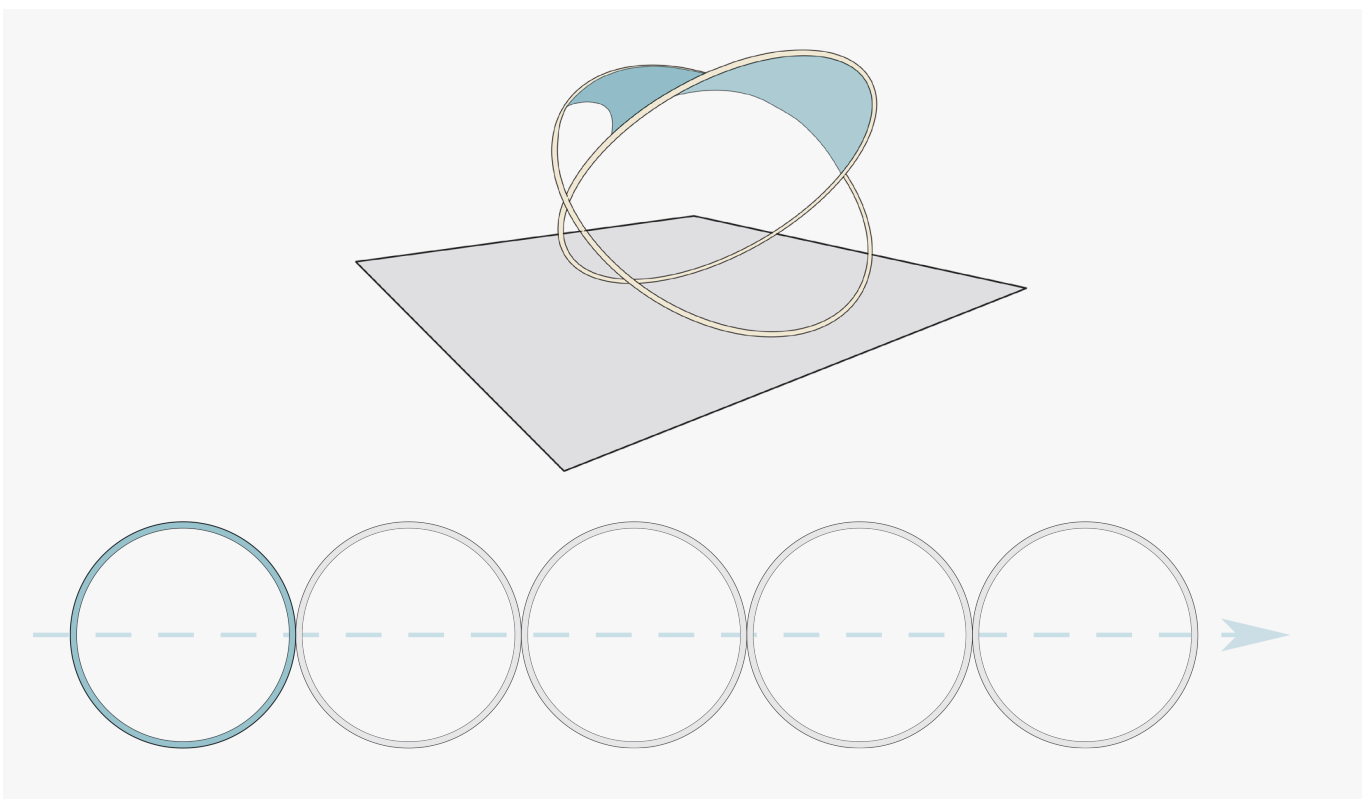
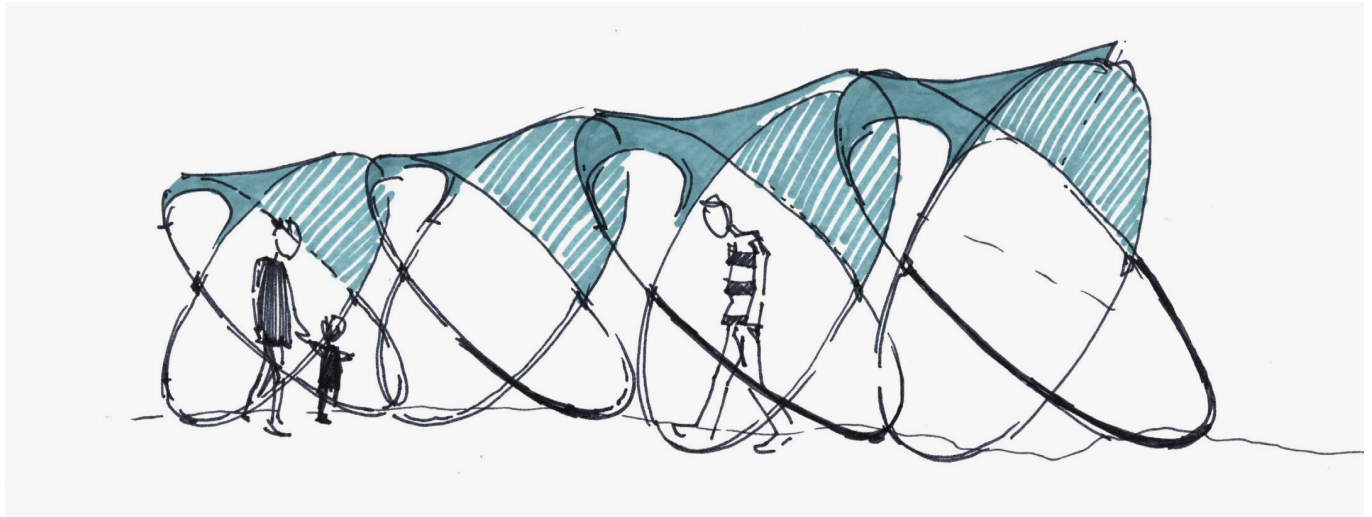
---

## SOLAR HARVESTING - PHONE CHARGERS



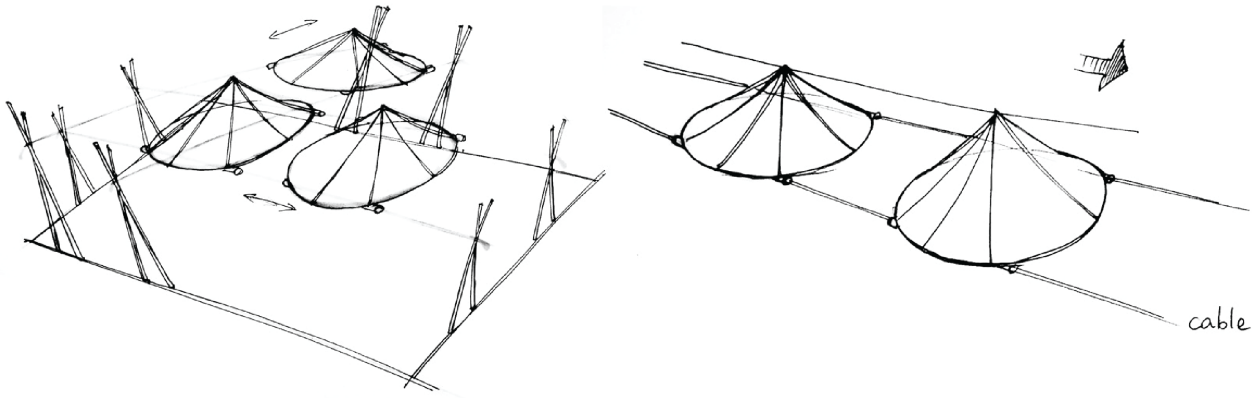
# CONCEPT DEVELOPMENT

## SHADING SYSTEM - LINEAR STRUCTURE



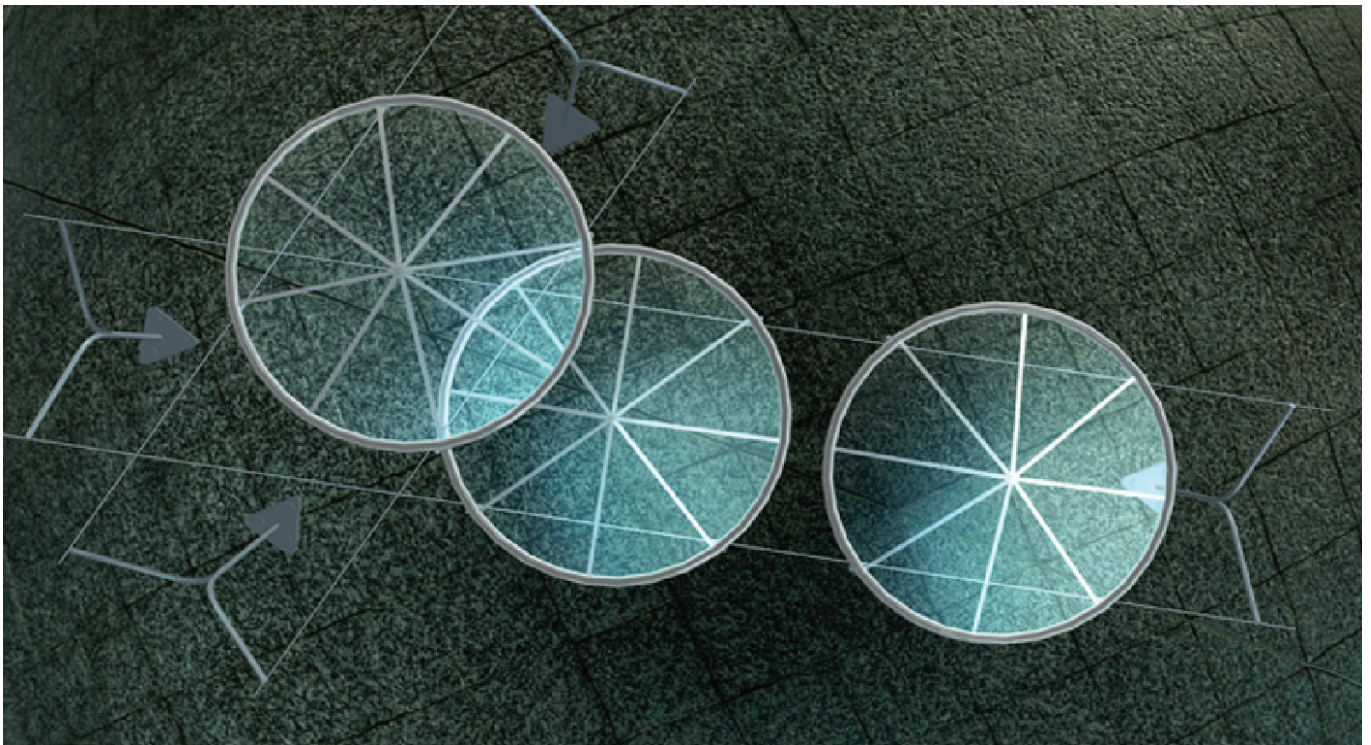
# CONCEPT DEVELOPMENT

## SHADING SYSTEM - DOULI



### SKETCHES

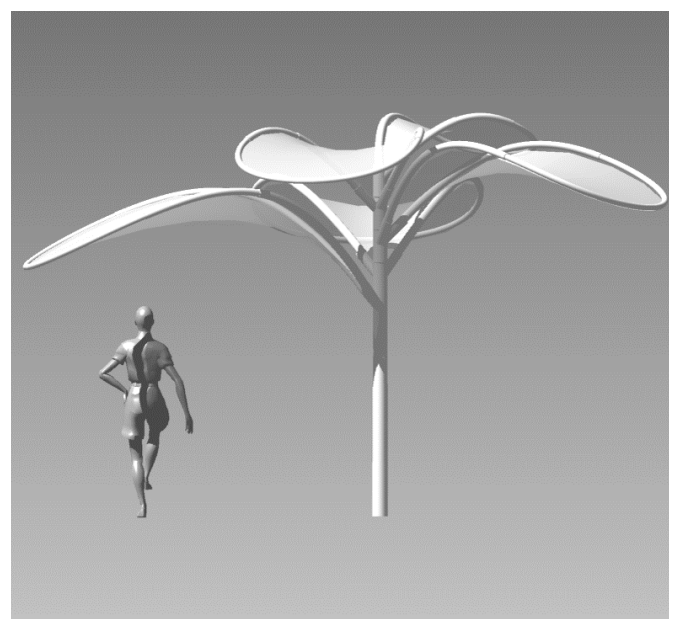
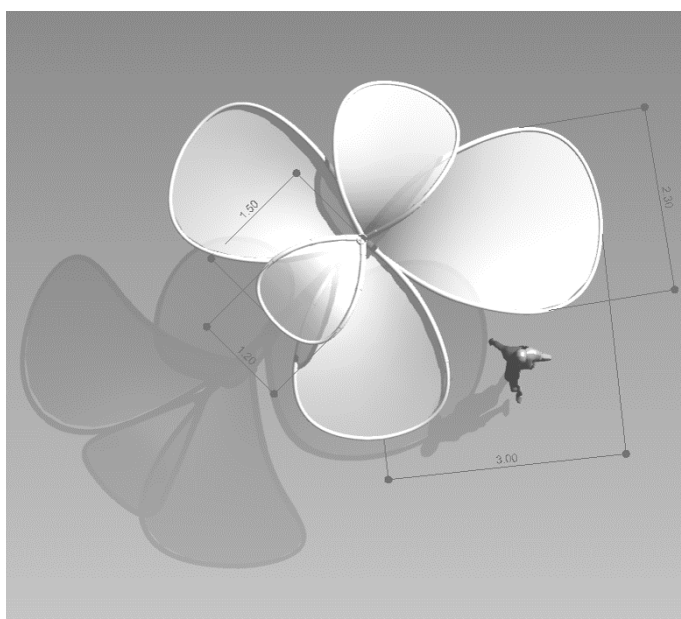
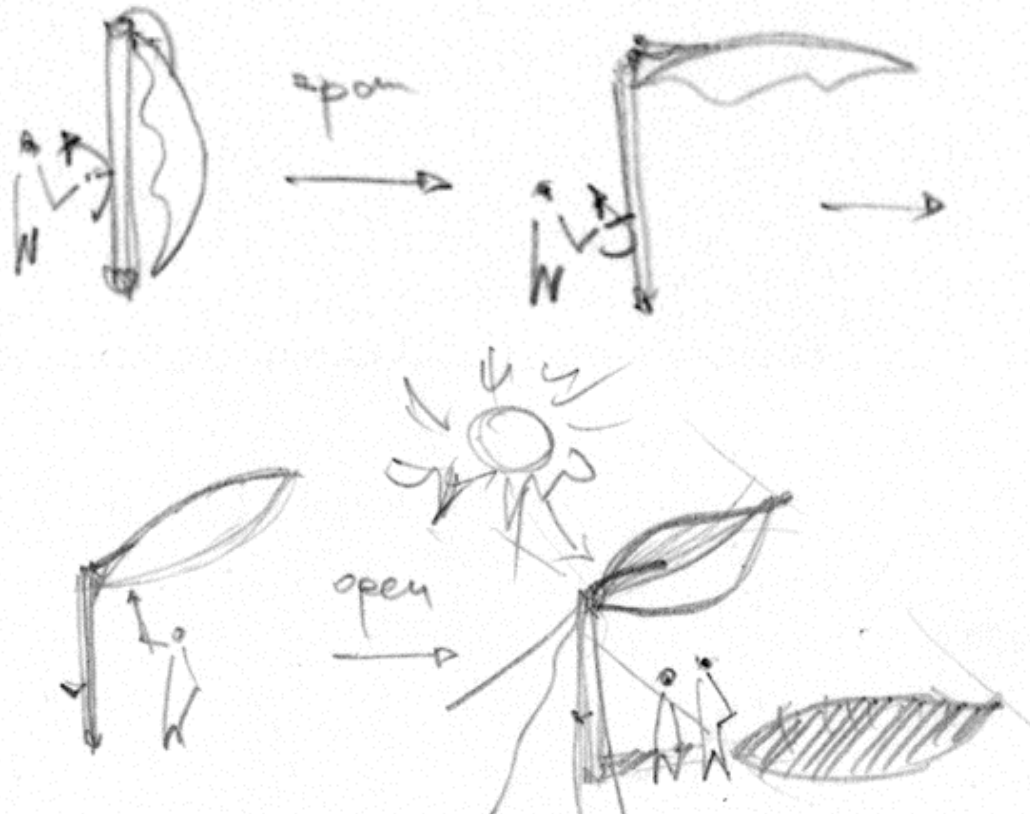
By using cables instead of poles, shading system, provides free area with fewer obstacles.



- MODEL OPTION 1

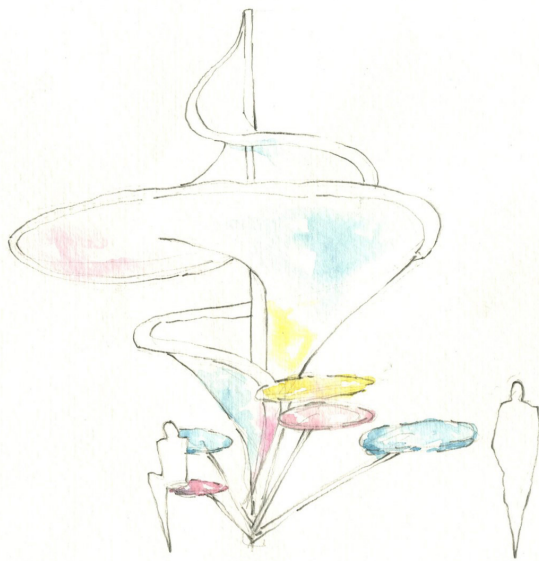
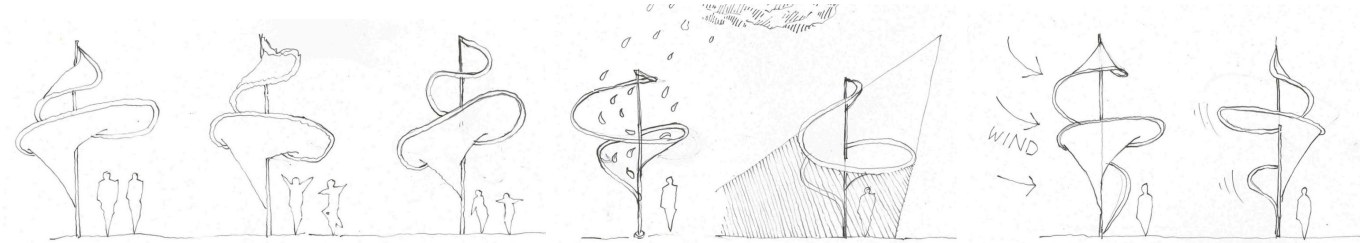
# CONCEPT DEVELOPMENT

## SHADING STRUCTURES



# CONCEPT DEVELOPMENT

## SHADING SYSTEM



MDT DESIGN LAB

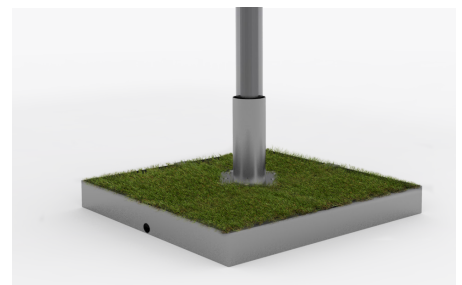
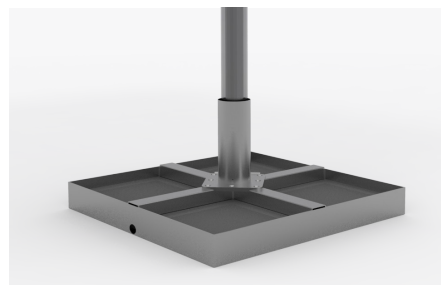
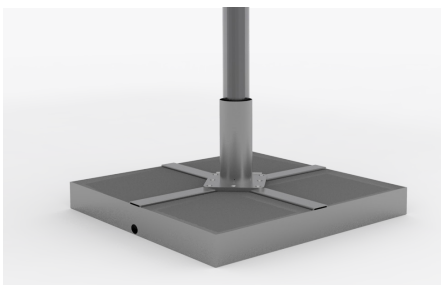
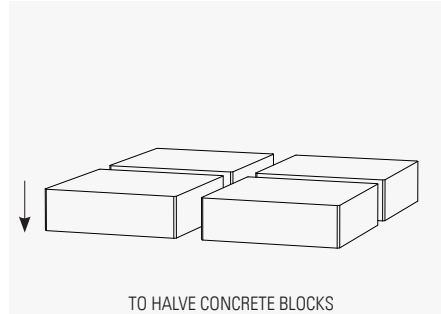
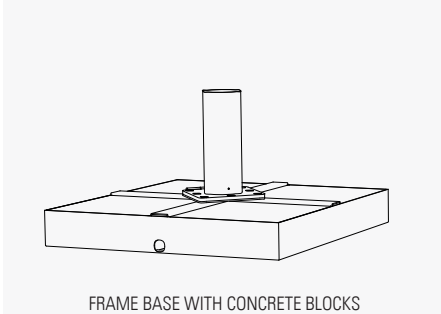
# CONCEPT DEVELOPMENT - GREEN SYSTEMS

## MODULAR GREEN WALL



# GREEN SYSTEMS

## GREEN SYSTEMS



UMBRELLA BASE PLANTING



TORUS TABLE PLANTING